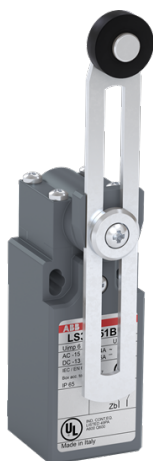


PRODUCT-DETAILS

# LS32P51B11

## LS32P51B11 Limit Switch



### General Information

Extended Product Type	LS32P51B11
Product ID	1SBV010351R1211
EAN	3471522000453
Catalog Description	LS32P51B11 Limit Switch
Long Description	LS32P51B11 is a 30 mm wide, standard Limit Switch made of fiber-glass reinforced UL-V0 material, with 2 mounting holes at the top, 1 ISO M16x1.5 cable entry on the bottom, adjustable plastic roller lever (Ø18 mm) actuator and 1 N.O + 1 N.C snap action (Zb type) contacts

### Ordering

EAN	3471522000453
Minimum Order Quantity	1 piece
Customs Tariff Number	85364900

### Dimensions

Product Net Width	30 mm
Product Net Height	98.5 mm
Product Net Depth / Length	45.5 mm
Product Net Weight	0.092 kg

---

**Container Information**


---

Package Level 1 Units	box 1 piece
Package Level 1 Width	54 mm
Package Level 1 Height	118 mm
Package Level 1 Depth / Length	32 mm
Package Level 1 Gross Weight	0.106 kg
Package Level 1 EAN	3471522000453

---



---

**Environmental**


---

Ambient Air Temperature	Operation -25 ... +70 °C Storage -30 ... +80 °C
RoHS Status	Following EU Directive 2011/65/EU

---



---

**Technical UL/CSA**


---

Pilot Duty of Contact Elements acc. UL508	A600 Q600
---	--------------

---



---

**Safety Information**


---

B10d Value	30 Millions operations
------------	------------------------

---



---

**Additional Information**


---

Action Type of the Contact Element (acc. to IEC 60947-5-1)	Snap Action Simultaneous
Actuator Type	adjustable plastic roller lever (Ø18 mm)
Conventional Free-air Thermal Current (I <sub>th</sub> )	acc. to IEC 60947-5-1, q = 40 °C 10 A
Degree of Protection	acc. to IEC 60529 IP65
Housing Material	Plastic
Maximum Electrical Switching Frequency	(AC-15) 3600 cycles per hour (DC-13) 3600 cycles per hour
Mechanical Durability	0 cycle
Mounting Type	30 mm (EN 50047)
Number and Type of Bottom Cable Glands	1 x M16x1.5 - Bottom
Order Multiple	1 piece
Product Main Type	LS30
Product Name	Limit Switch
Rated Impulse Withstand Voltage (U <sub>imp</sub> )	6 kV
Rated Insulation Voltage (U <sub>i</sub> )	acc. to IEC 60947-5-1 and VDE 0110 (Gr. C) 500 V acc. to UL/CSA 600 V
Rated Operational Current AC-15 (I <sub>e</sub> )	(230 V AC) 3.1 A (400 V) NC 4 (24 V) 10 A (130 V) 5.5 A (240 V) 3 A
Rated Operational Current DC-13 (I <sub>e</sub> )	(24 V) 6 A (110 V) 0.6 A (125 V) 0.55 A (250 V) 0.4 A

---

RoHS Date	20171115
Standards	IEC 60947-1, IEC 60947-5-1, EN 60947-1, EN 60947-5-1, UL 508 and CSA C22 -2 N°14

---

### Certificates and Declarations (Document Number)

CQC Certificate	CQC2004010305127663
cUL Certificate	9AKK107991A7379
Data Sheet, Technical Information	1SBC141157C0202
Declaration of Conformity - CCC	2020980305001785
Declaration of Conformity - CE	1SBD250883U1000
Environmental Information	1SBD250087E1000
Instructions and Manuals	1SBC141157C0202
RoHS Information	1SBD250883U1000

---

### Classifications

ETIM 4	EC001829 - Position switch modular
ETIM 5	EC001829 - Position switch modular
ETIM 6	EC000030 - End switch
ETIM 7	EC000030 - End switch
UNSPSC	39121500
WEEE Category	5. Small Equipment (No External Dimension More Than 50 cm)

---

### Categories

Low Voltage Products and Systems → Control Products → Sensors → Limit Switches

