



**!** Warnung! Gefährliche Spannung! Installation nur durch elektrotechnische Fachkraft.

Warning! Hazardous voltage! Installation by person with electrotechnical expertise only.

Avertissement! Tension électrique dangereuse! Installation uniquement par des personnes qualifiées en électrotechnique.

¡Advertencia! ¡Tensión peligrosa! La instalación deberá ser realizada únicamente por electricistas especializados.

Avvertenza! Tensione pericolosa! Far installare solo da un elettricista specializzato.

Varning! Farlig spänning! Installation får endast utföras av en elektriker.

Осторожно! Опасное напряжение! Монтаж должен выполняться только специалистом-электриком.

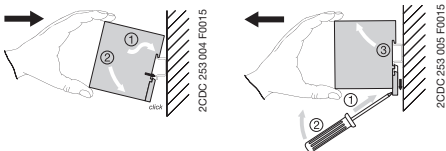
警告! 危险电压! 仅可由电气专业人员安装。

## CM-PBE, CM-PFE, CM-PFE.2, CM-PVE

### Operating and installation instructions

#### Three-phase monitoring relays, CM range

**Note:** All statements serve exclusively to describe the product and have not to be understood as assured characteristics with legal force. Further information and data is obtainable from the catalogues and data sheets of this product, from the local ABB sales organisations as well as on the ABB homepage [www.abb.com](http://www.abb.com). Subject to change without prior notice.



 Ø 4.5 mm / 0.177 in / PZ 1	0.6...0.8 Nm 5.31...7.08 lb.in
	2 x 0.75...1.5 mm <sup>2</sup> 2 x 18...16 AWG
	2 x 1.0...1.5 mm <sup>2</sup> 2 x 18...16 AWG
	2 x 0.75...1.5 mm <sup>2</sup> 2 x 18...16 AWG

2CDC 252 048 F0009

**Technical data:**

$T_a$ : -20 ... +60 °C (-4 ... +140 °F)

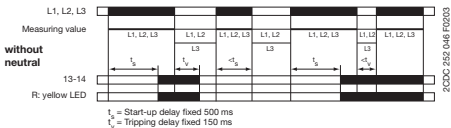
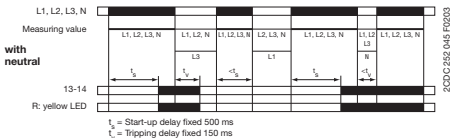
IP 20

Pollution degree 3

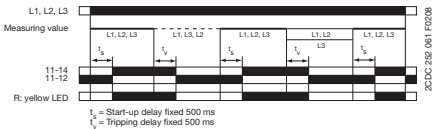
**CM-PFE.2:**

If both, ambient temperature > 50 °C and rated operational currents > 2 A, lateral spacing to other units has to be min. 10 mm (0.394 in).

**CM-PBE**



**CM-PFE, CM-PFE.2**



**CM-PVE**

