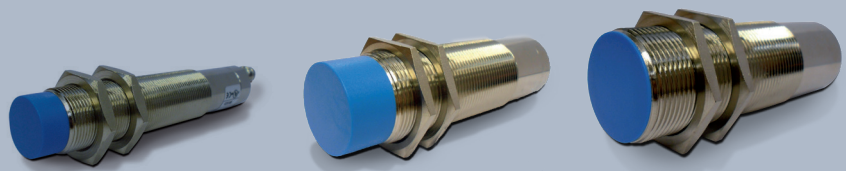
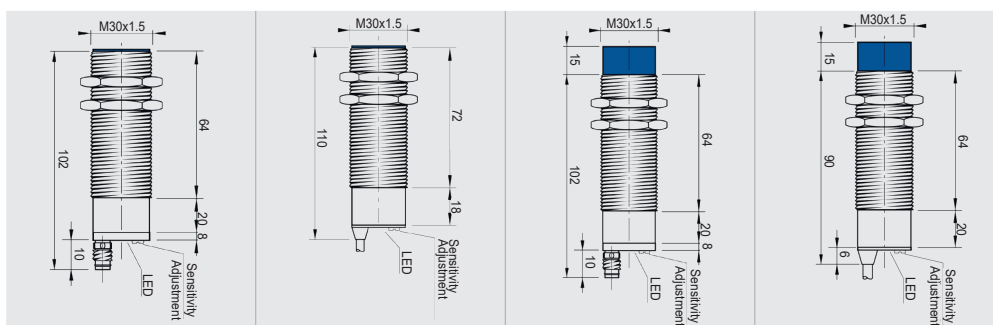
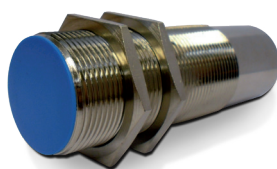


CAPACITIVE

**BASIC, CAPACITIVE A.C.,
MULTIVOLTAGE**

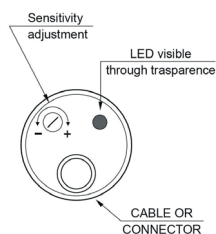


CAPACITIVE BASIC M30



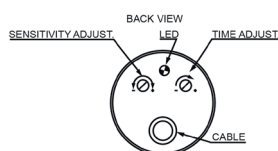
				STANDARD			
				FLUSH		NON FLUSH	
				M8 conn	cable	M8 conn	cable
NOMINAL SWITCHING DISTANCE				1...15 mm	1...15 mm	1...25 mm	1...25 mm
10-30 Vdc	PNP/NPN NO-NC	4 wires	order No.	---	---	---	---
10-30 Vdc	PNP NO	3 wires	order No.	---	---	---	---
10-30 Vdc	PNP NC	3 wires	order No.	---	---	---	---
10-30 Vdc	NPN NO	3 wires	order No.	---	---	---	---
10-30 Vdc	NPN NC	3 wires	order No.	---	---	---	---
10-30 Vdc	PNP NO-NC	4 wires	order No.	CS10K2 958901080	CS10 958901060	CS16K2 958901330	CS16 958901140
10-30 Vdc	NPN NO-NC	4 wires	order No.	CS09K2 958901230	CS09 958901180	CS15K2 958901300	CS15 958901200
10-30 Vdc	NO-NC	2 wires	order No.	---	---	---	---
20-250 Vac/Vdc	NO	2 wires	order No.	---	---	---	---
20-250 Vac/Vdc	NC	2 wires	order No.	---	---	---	---
20-250 Vac	NO	2/3wires	order No.	---	---	---	---
10-30 Vdc	Analog 0-20 mA	3 wires	order No.	---	---	---	---
NAMUR amplifier	NAMUR	2 wires	order No.	---	---	---	---
Nominal Voltage				12-30Vdc(-15/10%)	12-30Vdc(-15/10%)	12-30Vdc(-15/10%)	12-30Vdc(-15/10%)
Residual Ripple				<10%	<10%	<10%	<10%
Hysteresis				depends on the sensing distance	depends on the sensing distance	depends on the sensing distance	depends on the sensing distance
Max. Output Current				200 mA	200 mA	200 mA	200 mA
Residual Current				< 10 mA	< 10 mA	< 10 mA	< 10 mA
Voltage Drop				< 1,8 V (I=100 m A)	< 1,8 V (I=100 m A)	< 1,8 V (I=100 m A)	< 1,8 V (I=100 m A)
Setting				sensitivity adjustment trimmer	sensitivity adjustment trimmer	sensitivity adjustment trimmer	sensitivity adjustment trimmer
Operation Led				Yellow	Yellow	Yellow	Yellow
Switching Frequency				10 Hz	10 Hz	10 Hz	10 Hz
Start Up Delay				< 100 ms	< 100 ms	< 100 ms	< 100 ms
Repeatability				≤ 5%	≤ 5%	≤ 5%	≤ 5%
Short Circuit Protection				Present(self-resetting)	Present(self-resetting)	Present(self-resetting)	Present(self-resetting)
Electric Protections				Against polarity reversal inductive loads	Against polarity reversal inductive loads	Against polarity reversal inductive loads	Against polarity reversal inductive loads
Temperature Limits				- 25 +70 C	- 25 +70 C	- 25 +70 C	- 25 +70 C
Protection Degree				IP67	IP67	IP67	IP67
Cable Length				---	2 m	---	2 m
Cable Section				---	4x 0,25 mm ²	---	4x 0,25 mm ²
Housing Material				Nickel-plated brass	Nickel-plated brass	Nickel-plated brass	Nickel-plated brass
Weight - Cable Output				---	250 g	---	250 g
Weight - Connector Output				210 g	---	210 g	---

CAPACITIVE SETTINGS & CONNECTIONS



Sensitivity adjustment

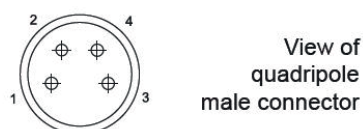
The sensitivity adjustment must be done when the sensor is installed in a definite and steady position. The regulation must be done in a position half way between minimum and maximum, because, being air dielectric, a strong humidity variation could cause, if the regulation is very light, nuisance tripping. The sensing distance of the sensor depends on the materials to detect, on its dimension and conductivity. The distance could change according to temperature variations.



Timer adjustment

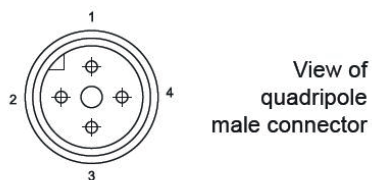
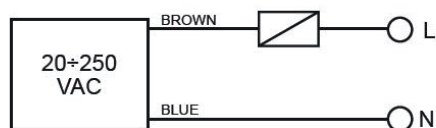
The timer trimmer allows to set a delay, on the activation (delay ON) or in the de-activation of the output, depends on the model, after the detection of the object. The output will remain active (or inactive) proportionally to the setting point of the screw, starting from 1 second up to 5 minutes.

M8 4-pole NO-NC models



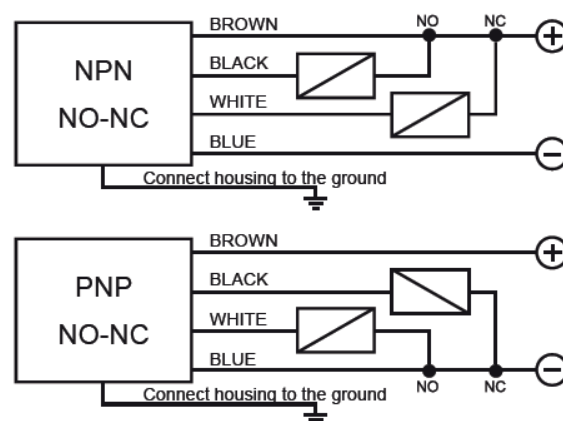
CONTACTS CONFIGURATION				
Output	Contacts numbers			
NPN/PNP NO+NC	1	2	3	4
	+	NC	-	NO

2 wires Vac models

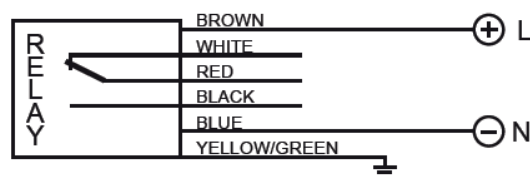


CONTACTS CONFIGURATION				
Available	Contacts numbers			
NO	1	2	3	4
	L		N	

4 wires NO-NC Vdc model



6 wires Multivoltage models





Rev. 13, 12/2020

Product and Company names and logos referenced may be either trademarks or registered trademarks of their respective companies. We reserve the right to make modifications and improvements.

www.datalogic.com