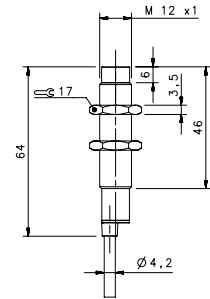
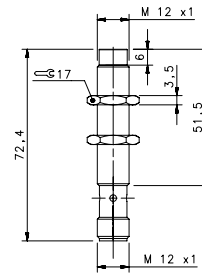
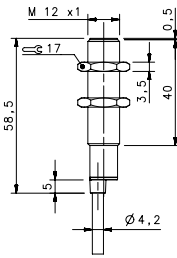
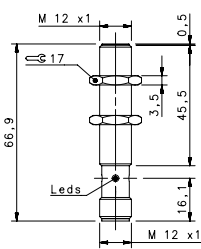


BASIC



BASIC M12



STANDARD X2

FLUSH

NON FLUSH

M12 conn

cable

M12 conn

cable

NOMINAL SWITCHING DISTANCE

4 mm

8 mm

			4 mm		8 mm	
10-30 Vdc	PNP/NPN NO-NC	4 wires	IS-12-E0-S2 order No. 95B067230	IS-12-E0-03 95B067190	IS-12-F0-S2 95B067250	IS-12-F0-03 95B067210
10-30 Vdc	PNP NO	3 wires	IS-12-E1-S2 order No. 95B067030	IS-12-E1-03 95B067670	IS-12-F1-S2 95B067020	IS-12-F1-03 95B067740
10-30 Vdc	PNP NC	3 wires	IS-12-E2-S2 order No. 95B067640	IS-12-E2-03 95B067680	IS-12-F2-S2 95B067710	IS-12-F2-03 95B067750
10-30 Vdc	NPN NO	3 wires	IS-12-E3-S2 order No. 95B067650	IS-12-E3-03 95B067690	IS-12-F3-S2 95B067720	IS-12-F3-03 95B067760
10-30 Vdc	NPN NC	3 wires	IS-12-E4-S2 order No. 95B067660	IS-12-E4-03 95B067700	IS-12-F4-S2 95B067730	IS-12-F4-03 95B067770
10-30 Vdc	PNP NO-NC	4 wires	---	---	---	---
10-30 Vdc	NPN NO-NC	4 wires	---	---	---	---
10-30 Vdc	NO-NC	2 wires	IS-12-E9-S2 order No. 95B067240	IS-12-E9-03 95B067200	IS-12-F9-S2 95B067260	IS-12-F9-03 95B067220
20-250 Vac/Vdc	NO	2 wires	---	---	---	---
20-250 Vac/Vdc	NC	2 wires	---	---	---	---
20-250 Vac	NO	2/3 wires	---	---	---	---
10-30 Vdc	Analog 0-20 mA	3 wires	---	---	---	---
NAMUR amplifier	NAMUR	2 wires	---	---	---	---
Nominal Voltage			10-30 Vdc (-15/10%)	10-30 Vdc (-15/10%)	10-30 Vdc (-15/10%)	10-30 Vdc (-15/10%)
Residual Ripple			< 10%	< 10%	< 10%	< 10%
Hysteresis			< 10%	< 10%	< 10%	< 10%
Max. Output Current			100 mA	100 mA	100 mA	100 mA
Min. Output Current			---	---	---	---
Residual Current			< 10 mA	< 10 mA	< 10 mA	< 10 mA
Voltage Drop			< 1,2 V (I=100mA)	< 1,2 V (I=100mA)	< 1,2 V (I=100mA)	< 1,2 V (I=100mA)
Operation Led			Yellow	Yellow	Yellow	Yellow
Switching Frequency			500 Hz/200 Hz (2 wires NO-NC)	500 Hz/200 Hz (2 wires NO-NC)	400 Hz/200 Hz (2 wires NO-NC)	400 Hz/200 Hz (2 wires NO-NC)
Start Up Delay			< 75 ms	< 75 ms	< 75 ms	< 75 ms
Repeatability			< 3%	< 3%	< 3%	< 3%
Short Circuit Protection			Present (self-resetting)	Present (self-resetting)	Present (self-resetting)	Present (self-resetting)
Electric Protection			Against polarity reversal inductive loads	Against polarity reversal inductive loads	Against polarity reversal inductive loads	Against polarity reversal inductive loads
Temperature Limit			(-25 ... +70 °C)	(-25 ... +70 °C)	(-25 ... +70 °C)	(-25 ... +70 °C)
Protection Degree			IP67	IP67	IP67	IP67
Cable Length			---	---	---	---
Cable Section			---	2 x 0,34 mm ² 3 x 0,14 mm ² 4 x 0,25 mm ²	---	2 x 0,34 mm ² 3 x 0,14 mm ² 4 x 0,25 mm ²
Housing Material			Nickel-plated brass	Nickel-plated brass	Nickel-plated brass	Nickel-plated brass
Active face			LCP	LCP	LCP	LCP
Tightening torque			* see page 5 of the Inductive Sensors Catalog	* see page 5 of the Inductive Sensors Catalog	* see page 5 of the Inductive Sensors Catalog	* see page 5 of the Inductive Sensors Catalog
Weight - Cable Output			---	---	---	---
Weight - Connector Output			60 g	60 g	60 g	60 g



Rev. 13, 12/2020

Product and Company names and logos referenced may be either trademarks or registered trademarks of their respective companies. We reserve the right to make modifications and improvements.

www.datalogic.com